



Employment Bulletin

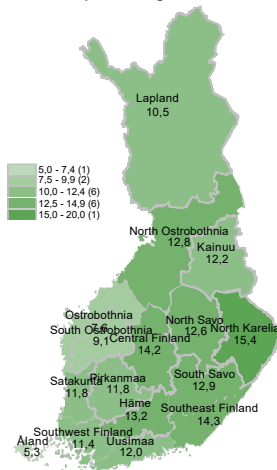
February 2025



KEHA Centre

326,400 unemployed jobseekers in February

Unemployed jobseekers' percentage of the workforce by ELY centre



At the end of February, a total of 326,400 unemployed jobseekers were registered with municipal employment services. This is 36,700 more than a year earlier. Compared with the previous month, the number of unemployed jobseekers increased by 600. Unemployed jobseekers accounted for 12.0 per cent of the labour force, which is 1.2 percentage points more than the year before. The figures are from the Employment Service Statistics of Development and Administration Services Centre for ELY Centres (KEHA Centre).

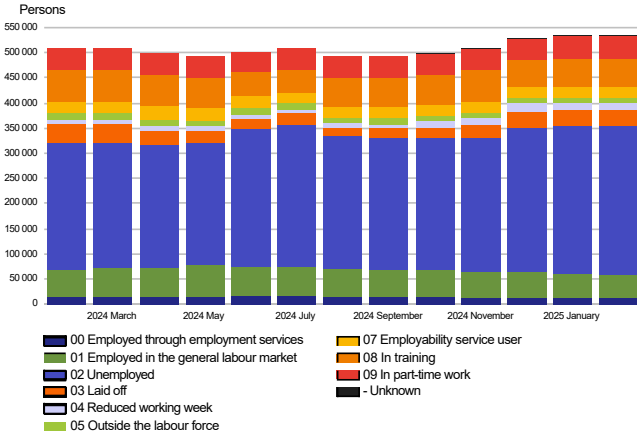
Starting on 1 March 2025, the Development and Administrative Services Centre (KEHA Centre) will be responsible for the Employment Bulletin and Employment Service Statistics.

Trends:

- The total number of all jobseekers increased by 25,500
- The number of unemployed jobseekers increased by 36,700 from the previous year
- The number of people fully laid off decreased by 4,800
- Services included in the activation rate had 18,100 fewer participants than a year ago
- The number of new job vacancies decreased by 16,900 from the previous year

All jobseekers

**Jobseekers by group
on calculation date**



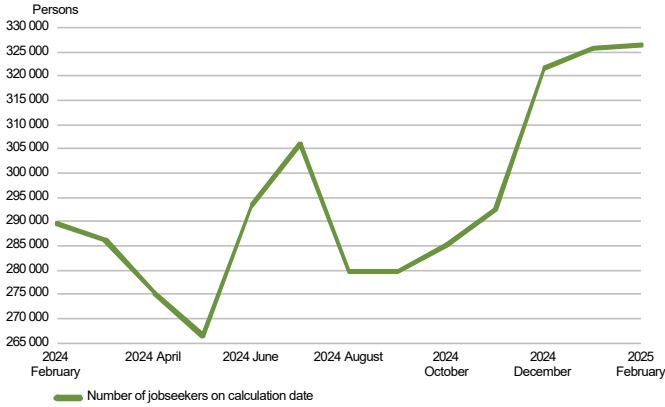
The total number of jobseekers increased

At the end of February, the number of jobseekers registered with municipal employment services totalled 534,100, up 25,500 on the previous year. Of the jobseekers, 290,300 were men and 243,600 were women. Compared to the situation a year ago, the number of men increased by 13,200 and the number of women increased by 12,200.

Of the jobseekers, 103,400 were employed: 48,500 of them were in full-time work, 44,000 were in part-time work and 10,900 were employed through employment services. The number of jobseekers outside the labour force was 90,600, of whom 21,300 were in services promoting employment and 58,200 in training. Of the jobseekers, 326,400 were unemployed jobseekers, which is 36,700 more than the year before. In February, 30,600 of unemployed jobseekers were fully laid off, which is the same as in January. The number of people fully laid off decreased by 4,800 from February a year earlier. Furthermore, jobseekers on a reduced working week numbered 13,600, representing an increase of 3,200 from the year before.

Unemployed jobseekers

UNEMPLOYED JOBSEEKERS
monthly

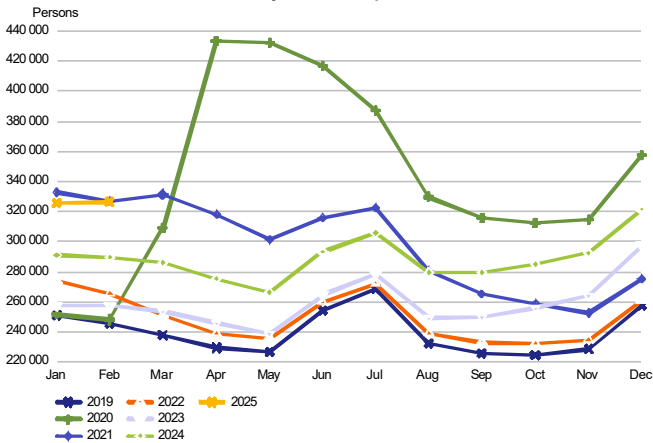


Increase in unemployed jobseekers in February

At the end of February, the number of unemployed jobseekers registered with municipal employment services totalled 326,400, up 36,700 on the previous year. Compared with January, the number of unemployed jobseekers increased by 600. The number of new job searches among unemployed jobseekers totalled 12,900 in February, down 1,800 from February a year ago. In February, the number of starting periods of unemployment totalled 30,300, representing a decrease of 8,000 on the year before. The number of starting periods of unemployment decreased by 13,700 from January. The number of starting periods is always greater than the number of job searches because new unemployment periods are also registered from the existing groups of jobseekers.

The number of foreign citizens among unemployed jobseekers totalled 49,900, up 7,600 from February a year ago. Of these foreign unemployed jobseekers, EU/EEA citizens accounted for 12,000 at the end of February, up 800 from the year before.

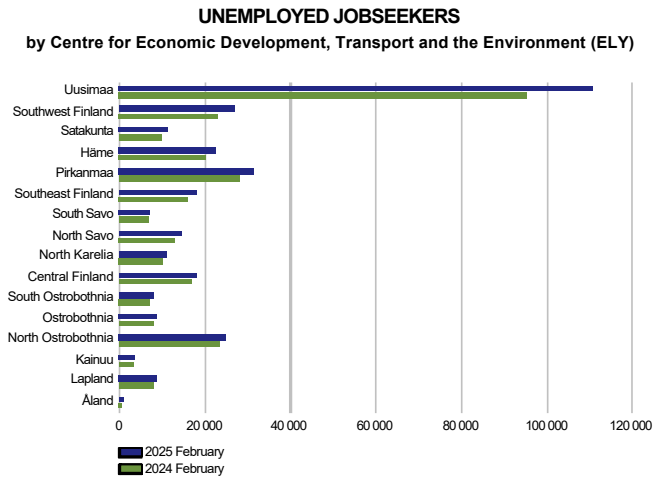
UNEMPLOYED JOBSEEKERS
month by month comparison



The number of people fully laid off decreased

In February, 30,600 of unemployed jobseekers were fully laid off, which is the same as in January. The number of people fully laid off decreased by 4,800 from February a year earlier. In February, the number of job searches among those fully laid off totalled 2,800, representing a decrease of 800 on the year before. The number of starting periods of full layoffs was 8,900, down 3,400 from February a year ago. The number of starting periods of full layoffs decreased by 2,100 from January. The number of people fully laid off fell in eight and increased in two occupational groups. The number of people fully laid off decreased the most in the groups of 'unknown' (-2,700) craft and related trades workers (-1,100), elementary occupations (-700) and skilled agricultural, forestry and fishery workers (-300). The number of people laid off increased in the occupational groups of professionals (400) and managers (300).

Unemployed jobseekers by region



Unemployment increased in the areas of all ELY Centres

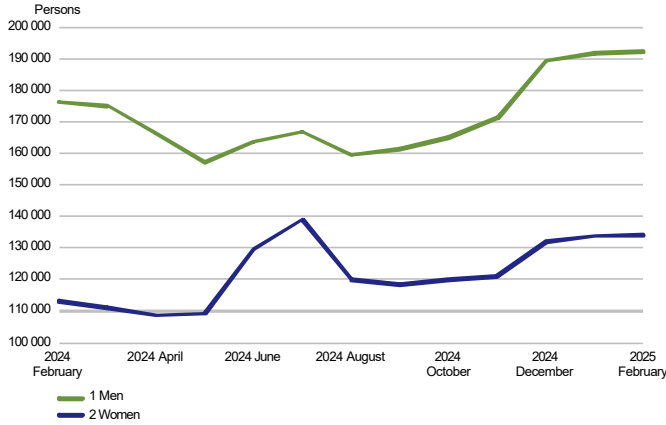
Compared to the same period in the previous year, the number of unemployed jobseekers increased in the areas of all Centres for Economic Development, Transport and the Environment (ELY Centres) in February; the most in Southwest Finland (17%), Uusimaa (17%), Kainuu (16%), Satakunta (13%), Pirkanmaa (12%) and Southeast Finland (12%). In Åland, the number of unemployed jobseekers increased by 15%. Compared with January, the number of unemployed jobseekers increased by five, decreased by five, and remained unchanged in five ELY Centre areas. Unemployment fell the most in Ostrobothnia (-3%), Pirkanmaa (-1%), Southwest Finland (-1%) and Lapland (-1%). Unemployment grew in South Ostrobothnia (1%), Central Finland (1%), Uusimaa (1%), Satakunta (1%) and Southeast Finland (1%). In Åland, the number of unemployed jobseekers decreased by 2% from January.

Unemployed jobseekers and jobs vacant by ELY centre

ELY centre	Unemployed jobseekers			Change			Of the Unemployed jobseekers'			Change		
	Feb 2025	Jan 2025	Feb 2024	Feb 2025	Feb 2024	Feb 2024	Feb 2025	Jan 2025	Feb 2024	Feb 2025	Feb 2024	
	Unemployed jobseekers			%			%			Jobs vacant		
Uusimaa	110 889	109 875	95 166	15 723	17	7 680	12,0	13 271	13 383	19 429	-6 158	-32
Southwest Finland	27 016	27 221	22 993	4 023	17	2 446	11,4	4 105	3 720	5 707	-1 602	-28
Satakunta	11 320	11 243	9 987	1 333	13	1 058	11,8	2 405	3 021	3 596	-1 191	-33
Häme	22 642	22 666	20 394	2 248	11	2 428	13,2	3 299	2 719	5 233	-1 934	-37
Pirkanmaa	31 356	31 625	27 943	3 413	12	2 680	11,8	4 613	6 804	7 944	-3 331	-42
Southeast Finland	18 032	17 929	16 093	1 939	12	2 040	14,3	2 115	2 920	2 958	-843	-28
South Savo	7 176	7 169	6 537	639	10	812	12,9	2 423	2 505	2 703	-280	-10
North Savo	14 310	14 310	13 042	1 268	10	1 905	12,6	3 111	2 602	4 451	-1 340	-30
North Karelia	11 107	11 139	10 021	1 086	11	1 104	15,4	1 474	1 320	1 700	-226	-13
Central Finland	17 910	17 671	16 853	1 057	6	1 616	14,2	2 422	2 240	2 866	-444	-15
South Ostrobothnia	7 825	7 712	7 064	761	11	1 262	9,1	2 116	2 345	3 121	-1 005	-32
Ostrobothnia	8 789	9 058	8 034	755	9	792	7,6	3 052	3 052	6 199	-3 147	-51
North Ostrobothnia	24 921	24 956	23 325	1 596	7	3 025	12,8	4 071	3 796	7 089	-3 018	-43
Kainuu	3 668	3 667	3 166	502	16	491	12,2	771	565	1 173	-402	-34
Lapland	8 549	8 611	7 994	555	7	1 139	10,5	3 900	3 600	3 930	-30	-1
Åland	797	811	692	105	15	...	5,3	586	530	686	-100	-15
Abroad	92	100	367	-275	-75	51	.	3 999	3 111	6 287	-2 288	-36
Unknown	5	6	0	5	0	...	0,0	6 067	6 110	0	6 067	0
WHOLE COUNTRY	326 407	325 772	289 673	36 734	13	30 579	12,0	63 800	64 343	85 072	-21 272	-25

Unemployed jobseekers by gender and age-group

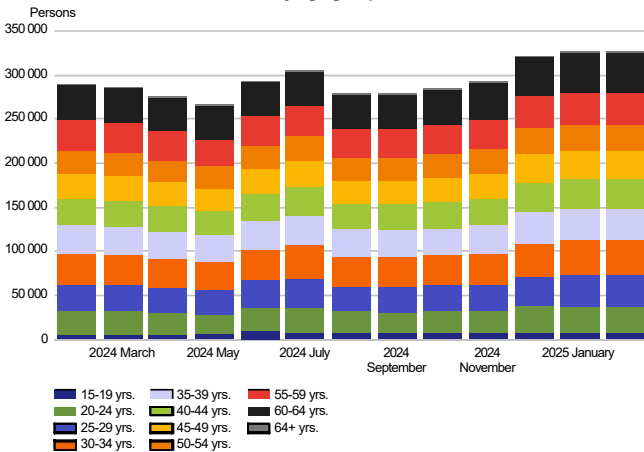
**UNEMPLOYED JOBSEEKERS
by gender**



Unemployment increased more among women than men

Of unemployed jobseekers, 192,300 (59%) were men and 134,000 (41%) women, indicating an increase of 500 for men and of 200 for women from the figures for January. Compared with February a year ago, unemployment increased by 15,800 (9%) among men and by 20,800 (18%) among women.

**UNEMPLOYED JOBSEEKERS
by age group**

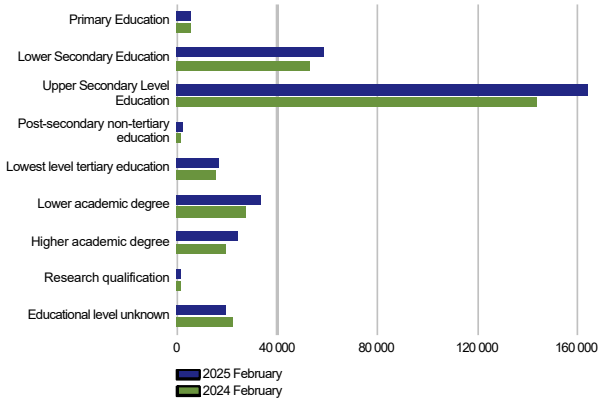


Unemployment increased in all age groups

At the end of February, unemployed jobseekers under 25 years of age numbered 38,100, representing an increase by 6,100 from February a year ago. Youth unemployment decreased from January by 100. For those under 20, the number of unemployed was 7,700. The number of unemployed aged over 50 was 112,800, showing an increase of 10,600 on the year before. The number of unemployed aged over 55 was 83,000, which is 8,100 more than the year before. Unemployment increased in all age groups; the most among those over 64 (28%), those under 20 (24%) and those between 20 and 24 years of age (18%). Compared with January, unemployment increased in almost all age groups; the most among those between 55 and 59 years of age (1%) and between 45 and 49 years of age (1%). Unemployment decreased the most among the age groups of over 64 (-2%) and under 20 (-1%).

Unemployed jobseekers by levels of education and occupational group

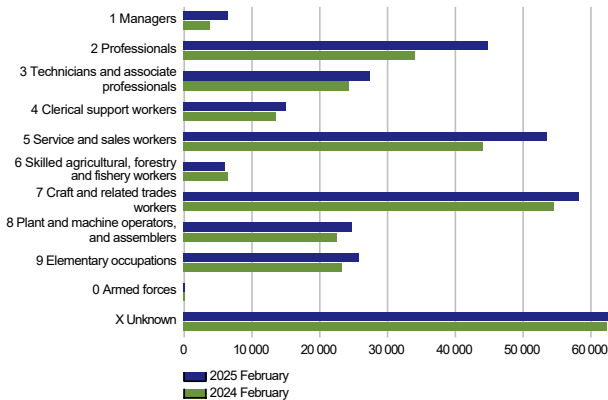
**UNEMPLOYED JOBSEEKERS
by level of education**



Unemployment decreased at two levels of education

Examined by level of education, unemployment decreased from February of last year at two educational levels and rose at seven. Unemployment fell at the level of education 'unknown' (-11%) and lower level basic qualifications (-2%). Unemployment increased the most among those with higher-degree level tertiary education (24%), postsecondary nontertiary education (24%), lower-degree level tertiary education (24%) and doctoral level education (21%).

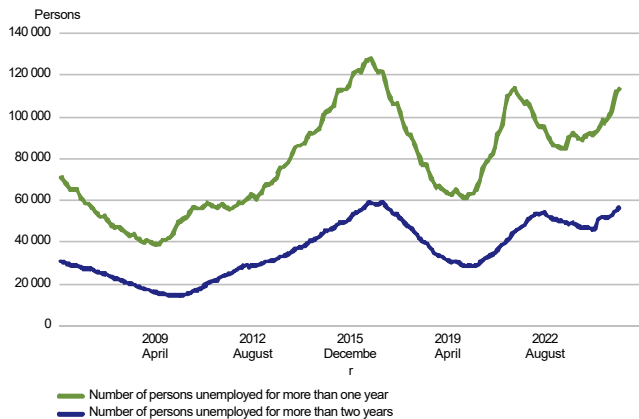
**UNEMPLOYED JOBSEEKERS
by occupational group**



Unemployment increased in almost all occupational groups

Examined by occupation, unemployment increased in almost all groups, with the exception of the occupational group of skilled agricultural, forestry and fishery workers (-600). Unemployment increased the most in the occupational groups of professionals (10,600), service and sales workers (9,600), craft and related trades workers (3,500), technicians and associate professionals (3,300), elementary occupations (2,500) and managers (2,500).

**LONG-TERM UNEMPLOYED
at the end of the month**



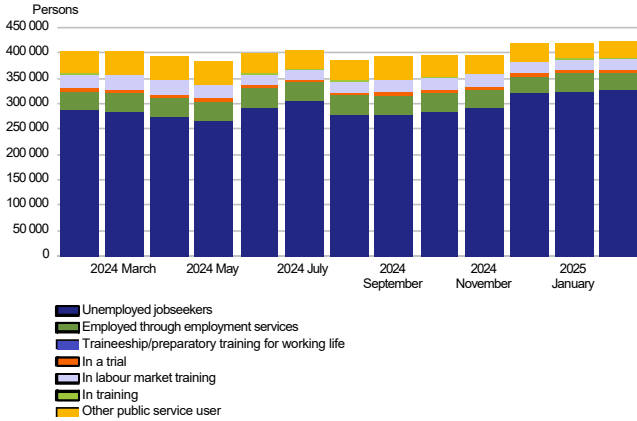
Increase in long-term unemployment

At the end of February, the number of long-term unemployed who had been unemployed without interruption for more than a year amounted to 113,400, up 21,200 on the previous year. Of the long-term unemployed, 68,300 were men and 45,000 were women. The number of men increased by 12,800 (23%) from the previous year and the number of women increased by 8,400 (23%). Long-term unemployed who had been unemployed without interruption for more than two years numbered 56,400, which is 9,900 more than a year ago.

Services

BROAD UNEMPLOYMENT

i.e. unemployed jobseekers and employment services users



Decrease in the number of persons covered by services

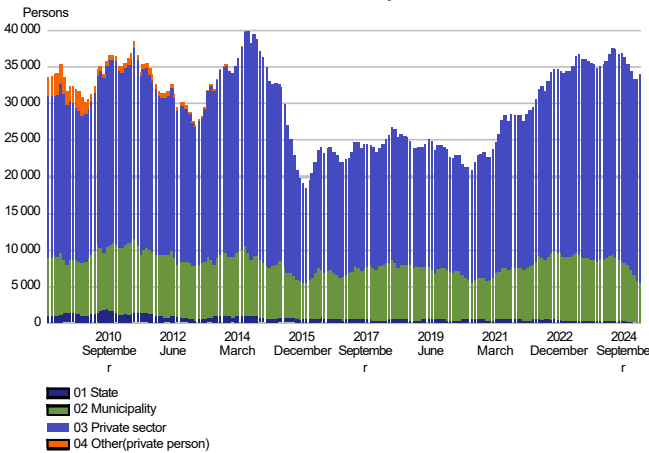
At the end of February, the number of persons covered by services included in the activation rate amounted to 95,400, down 18,100 on the previous year. Compared with January, the number of persons covered by such services increased by 600. The activation rate at the end of February was 22.6%, which is 5.6 percentage points lower than a year earlier. In all, 3.4% of the labour force were covered by these services.

Of those covered by services, the number of men was 47,200, down 7,900 on the previous year. The number of women covered by these services was 48,300, down 10,300 on the previous year.

Broad unemployment, or the total number of unemployed jobseekers and those covered by services, was 421,800 at the end of February. This is 18,600 more than a year earlier. The growth in broad unemployment was due to the increase in unemployed jobseekers.

EMPLOYED THROUGH EMPLOYMENT SERVICES

at the end of the month by sector



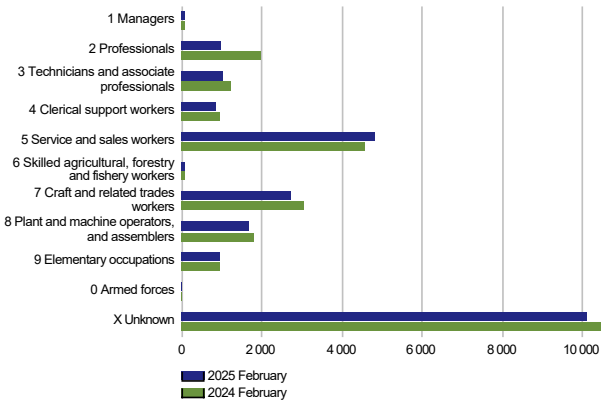
The number of placements increased in the private sector

At the end of February, the number of persons claiming pay subsidies or receiving startup grants totalled 34,000, which is 1,400 fewer than the year before. Of those in placements, 16% were employed in municipalities and 84% in the private sector. Since February the previous year, the number of placements had increased by 7% in the private sector, but decreased by 35% in municipalities. Of those in placements, 53% were men. Placements for men decreased by 600, and for women by 800 from the previous year.

In the February figures, there are no longer persons in placements in the central government. Placements in the central government ended at the end of 2024.

Labour market training, training and self-motivated studies

PERSONS IN LABOUR MARKET TRAINING
in target profession at the end of the month

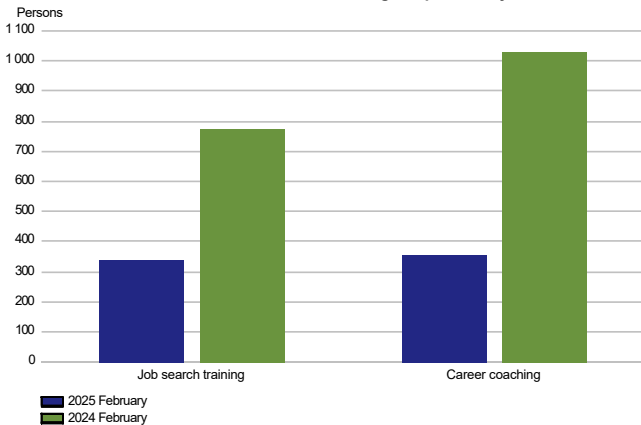


The number of persons in labour market training decreased

At the end of February, labour market training was attended by 23,200 students, down 1,900 on the previous year. Of the students, 10,600 were men and 12,600 were women. The number of men decreased by 1,100, and the number of women by 800 from the previous February. During February, 2,800 new students began labour market training, representing a decrease of 2,000 on the year before.

Based on target occupation, the largest subgroup within the category of 'unknown' at the end of February were people in integration training (9,600), which is 200 fewer than the year before.

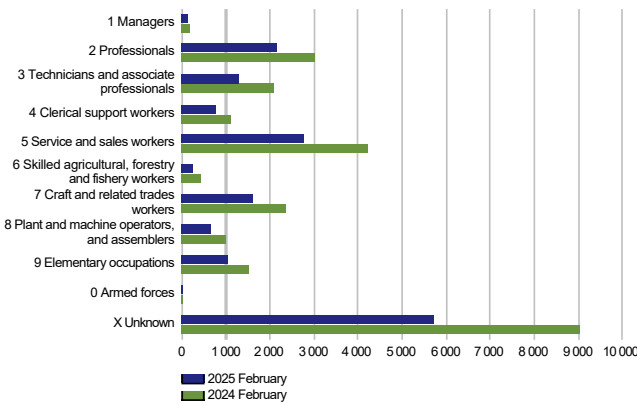
IN TRAINING
at the end of the month and during the previous year



The number of persons in training decreased

At the end of February, 700 persons were in training, which is 1,100 fewer than the year before. Of those in training, 400 were men and 300 were women. Career coaching was provided to 400 participants in February, which is 700 fewer than a year earlier. The number of people receiving job search training was 300, which is 400 fewer than the previous year.

IN SELF-MOTIVATED STUDIES
in person's profession at the end of the month



The number of people in self-motivated study decreased from the previous year

Self-motivated studies supported by unemployment benefits were attended by a total of 16,400 people, representing a decrease of 8,600 on the year before. The number of men receiving unemployment benefits for studies was 6,700, down 3,000 on the previous year. The corresponding number for women was 9,700, representing a decrease of 5,500 on the year before. Occupation was undetermined in case of 5,700 persons in the group of 'unknown', down 2,700 on the previous year.

Job alternation, rehabilitative work and trials

AS A JOB ALTERNATION SUBSTITUTE
at the end of the month and during the previous year by sector

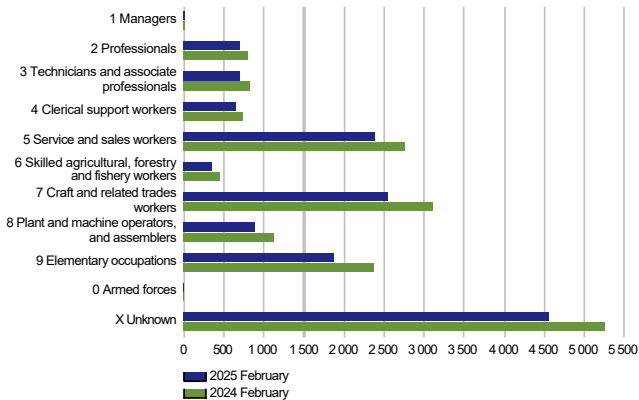


The number of job alternation substitutes decreased

A total of 200 persons were job alternation substitutes at the end of February, which is 1,600 fewer than a year earlier. Of the substitutes, 100 were men and 200 were women. The number of men decreased by 600 and the number of women by 1,100 from the previous year.

The job alternation leave system was terminated at the beginning of August 2024. The figures for job alternation substitutes includes those starting their leave before that time.

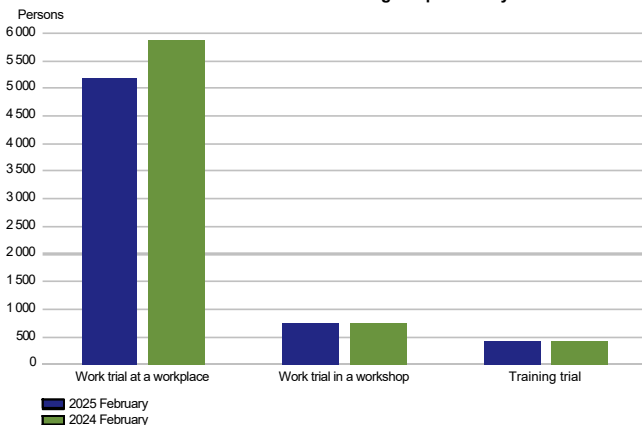
REHABILITATIVE WORK ACTIVITIES
at the end of the month and during the previous year



Fewer participants in rehabilitative work activities than in the previous year

A total of 14,600 persons participated in rehabilitative work activities at the end of February, which is 2,800 fewer than a year earlier. Of the participants, 8,100 were men and 6,500 were women. Compared to the situation a year ago, the number of men decreased by 1,700 and the number of women by 1,100.

IN TRIALS
at the end of the month and during the previous year

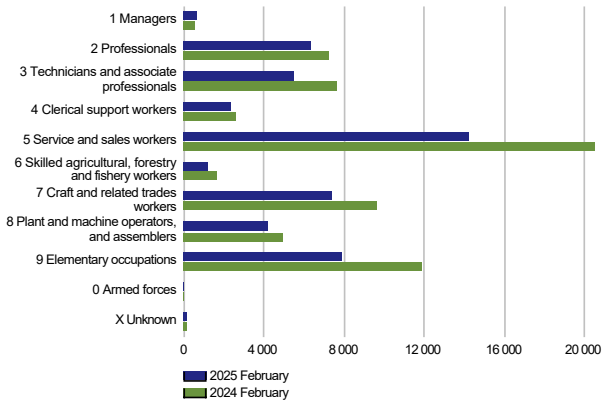


Participation in work and training trials decreased

Work and training trials had a total of 6,300 participants at the end of February, which is 700 fewer than the year before. Of the participants, 3,200 were men and 3,200 were women. The number of men decreased by 300 and the number of women by 400 from the previous year.

Jobs vacant

NEW JOB VACANCIES
during the month and during the previous year



Decrease in the number of new vacancies

The number of new vacancies reported to Job Market Finland during February totalled 49,800, which is 16,900 fewer than in February last year. In all, the number of unfilled vacancies in February was 112,400, which is 39,000 fewer than a year ago. A total of 1,600 of these vacancies were filled during February, 700 of them through employment services. A total of 15,000 vacancies were closed for applications because the application period had ended or because there was a sufficient number of applicants. In addition, a total of 32,900 vacancies were cancelled and 100 vacancies could not be filled. The number of vacancies remaining unfilled at Job Market Finland at the end of February was 63,800, down 21,300 on the previous year.

The number of new vacancies had decreased in nearly all occupational groups; the most in the groups of service and sales workers (-6,200), elementary occupations (-4,000), craft and related trades workers (-2,200), technicians and associate professionals (-2,200), professionals (-900) and plant and machine operators, and assemblers (-800). New vacancies in the managers' occupational group had increased (100).

Summary table

EMPLOYMENT SITUATION AT THE END OF 2025 FEBRUARY (I) AND
DURING FEBRUARY (II)
WHOLE COUNTRY

I EMPLOYMENT SITUATION AT THE END OF MONTH	Feb-25	Feb-24	CHANGE NUMBER	CHANGE %
A. JOBSEEKERS				
1. Unemployed jobseekers	326 407	289 673	36 734	12,7
of whom fully laid off	30 579	35 330	-4 751	-13,4
2. On reduced working week	13 620	10 416	3 204	30,8
3. Those who have work	103 432	111 656	-8 224	-7,4
of which in full-time work	48 532	52 314	-3 782	-7,2
of which in part-time work	44 029	43 633	396	0,9
of whom employed through employment services	10 871	15 709	-4 838	-30,8
4. Persons outside the labour force	90 649	96 853	-6 204	-6,4
of whom in services promoting employment	21 286	24 985	-3 699	-14,8
of whom in training	58 212	59 666	-1 454	-2,4
1-4 Total of jobseekers	534 108	508 598	25 510	5,0
B. LABOUR DEMAND				
1. Jobs vacant	63 800	85 072	-21 272	-25,0
of those notified for over a month	27 465	41 283	-13 818	-33,5
of those notified for over 2 months	8 394	11 339	-2 945	-26,0
C. PARTICIPATING IN SERVICES				
1. Employed by the State	0	219	-219	-100,0
2. Employed by municipalities	5 549	8 562	-3 013	-35,2
3. Employed by the private sector	28 416	26 554	1 862	7,0
1-3 Total number of employed people	33 965	35 335	-1 370	-3,9
4. Labour market training	23 203	25 119	-1 916	-7,6
5. Training	697	1 804	-1 107	-61,4
6. Engaged in work/training trials	6 325	7 031	-706	-10,0
7. As a job alternation substitute	234	1 853	-1 619	-87,4
8. Rehabilitative work	14 610	17 443	-2 833	-16,2
9. Self-motivated studies supported by unemployment benefit	16 391	24 971	-8 580	-34,4
1-9 Total number of people participating in services	95 425	113 556	-18 131	-16,0
D. STRUCTURE OF UNEMPLOYMENT				
1. Unemployed women	134 015	113 246	20 769	18,3
2. Unemployed men	192 267	176 427	15 840	9,0
3. Under 25 years old	38 089	31 964	6 125	19,2
4. Over 50 years old	112 793	102 213	10 580	10,4
5. Unemployed over a year	113 364	92 170	21 194	23,0
6. Foreign unemployed	49 896	42 299	7 597	18,0
E. UNEMPLOYMENT SECURITY				
1. Unemployed members of employees' unemployment funds	116 144	115 513	631	0,5
II EMPLOYMENT SITUATION DURING THE MONTH				
1. Unemployed jobseekers	350 243	319 847	30 396	9,5
2. Other jobseekers	205 625	214 039	-8 414	-3,9
1-2 Total number of jobseekers	555 868	533 886	21 982	4,1
3. Vacancies during a month	112 440	151 436	-38 996	-25,8
New vacancies during a month	49 850	66 723	-16 873	-25,3
Vacancies filled during a month	1 588	10 293	-8 705	-84,6
of those filled with job-seekers	675	2 903	-2 228	-76,7
Vacancies application period ended or sufficient number of applicants	14 973	37 969	-22 996	-60,6
Vacancies cancelled or could not be filled	33 042	24 241	8 801	36,3
4. Started spell of unemployment	30 340	38 348	-8 008	-20,9
5. Completed spell of unemployment	21 282	36 284	-15 002	-41,3
6. New jobs found through employment services	1 286	2 409	-1 123	-46,6
7. New entrants to labour market training	2 822	4 795	-1 973	-41,1



Foreigners' summary table

FOREIGNERS' EMPLOYMENT SITUATION AT THE END OF 2025 FEBRUARY (I) AND
DURING FEBRUARY (II)
WHOLE COUNTRY

I EMPLOYMENT SITUATION AT THE END OF MONTH	Feb-25	Feb-24	CHANGE NUMBER	CHANGE %
A. JOBSEEKERS				
1. Unemployed jobseekers	49 896	42 299	7 597	18,0
of whom fully laid off	4 326	4 764	-438	-9,2
2. On reduced working week	800	740	60	8,1
3. Those who have work	14 932	16 278	-1 346	-8,3
of which in full-time work	8 173	9 355	-1 182	-12,6
of which in part-time work	5 541	5 250	291	5,5
of whom employed through employment services	1 218	1 673	-455	-27,2
4. Persons outside the labour force	35 925	36 793	-868	-2,4
of whom in services promoting employment	2 713	2 997	-284	-9,5
of whom in training	31 244	31 756	-512	-1,6
1-4 Total of jobseekers	101 553	96 110	5 443	5,7
C. PARTICIPATING IN SERVICES				
1. Employed by the State	0
2. Employed by municipalities	408	658	-250	-38,0
3. Employed by the private sector	2 406	2 359	47	2,0
1-3 Total number of employed people	2 814	3 021	-207	-6,9
4. Labour market training	12 695	13 579	-884	-6,5
5. Training	40	221	-181	-81,9
6. Engaged in work/training trials	1 432	1 544	-112	-7,3
7. As a job alternation substitute	6	49	-43	-87,8
8. Rehabilitative work	815	1 069	-254	-23,8
9. Self-motivated studies supported by unemployment benefit	8 295	12 970	-4 675	-36,0
1-9 Total number of people participating in services	26 097	32 453	-6 356	-19,6
D. STRUCTURE OF UNEMPLOYMENT				
1. Unemployed women	23 472	19 180	4 292	22,4
2. Unemployed men	26 299	23 119	3 180	13,8
3. Under 25 years old	3 601	3 137	464	14,8
4. Over 50 years old	12 006	10 275	1 731	16,8
5. Unemployed over a year	13 210	9 837	3 373	34,3
E. UNEMPLOYMENT SECURITY				
1. Unemployed members of employees' unemployment funds	9 066	9 242	-176	-1,9
II EMPLOYMENT SITUATION DURING THE MONTH				
1. Unemployed jobseekers	54 153	47 573	6 580	13,8
2. Other jobseekers	49 875	51 623	-1 748	-3,4
1-2 Total number of jobseekers	104 028	99 196	4 832	4,9
4. Started spell of unemployment	4 434	6 379	-1 945	-30,5
5. Completed spell of unemployment	4 166	5 853	-1 687	-28,8
6. New jobs found through employment services	120	233	-113	-48,5
7. New entrants to labour market training	1 648	2 368	-720	-30,4



Regional table

UNEMPLOYED JOBSEEKERS AND JOBS VACANT BY ELY CENTRE AT THE END OF 2025 FEBRUARY
WHOLE COUNTRY

ELY centre	Workforce	Unemployed jobseekers							Unemployed over a year	Disabled and chron. ill	Jobs vacant
		% of workforce	Total	Men	Women	Under 20 years old	Under 25 years old	Over 50 years old			
Uusimaa	925 170	12,0	110 889	62 484	48 364	1 966	10 521	36 540	43 670	8 069	13 271
Southwest Finland	237 878	11,4	27 016	15 858	11 145	633	3 202	9 151	8 843	2 538	4 105
Satakunta	95 785	11,8	11 320	6 800	4 518	357	1 464	4 337	3 457	1 285	2 405
Häme	171 413	13,2	22 642	13 464	9 172	528	2 611	8 870	7 653	3 145	3 299
Pirkanmaa	265 388	11,8	31 356	17 695	13 648	760	4 166	9 488	10 660	3 160	4 613
Southeast Finland	125 985	14,3	18 032	11 012	7 009	473	2 147	7 213	5 144	1 595	2 115
South Savo	55 526	12,9	7 176	4 384	2 790	180	790	3 029	2 158	1 044	2 423
North Savo	113 471	12,6	14 310	9 056	5 252	389	1 912	5 138	4 643	1 526	3 111
North Karelia	71 972	15,4	11 107	6 881	4 220	309	1 330	4 279	3 967	1 232	1 474
Central Finland	126 468	14,2	17 910	10 874	7 032	515	2 545	5 939	6 290	1 616	2 422
South Ostrobothnia	85 930	9,1	7 825	4 944	2 869	236	1 147	2 642	1 916	1 101	2 116
Ostrobothnia	115 345	7,6	8 789	5 115	3 668	271	1 109	3 009	2 589	1 039	3 052
North Ostrobothnia	194 796	12,8	24 921	15 225	9 694	766	3 678	7 771	9 059	2 613	4 071
Kainuu	30 178	12,2	3 668	2 370	1 295	110	434	1 594	876	501	771
Lapland	81 343	10,5	8 549	5 588	2 960	193	938	3 489	2 190	1 007	3 900
Åland	15 085	5,3	797	437	360	23	91	268	213	39	586
Abroad	0	0,0	92	..	17	0	3 999
Unknown	0	0,0	5	..	0	0	6 067
Total	2 711 733	12,0	326 407	192 267	134 015	7 710	38 089	112 793	113 364	31 511	63 800



Information about the website

On this website you will find the latest statistics from the Development and Administrative Services Centre's (KEHA Centre) monthly Employment Bulletin. You can access a .pdf version of the current and previous months' Employment Bulletin by following the link on the right.

The Employment Bulletin is based on the data from the Employment Service Statistics. The Development and Administrative Services Centre (KEHA Centre) compiles statistics on the clients of the Employment authorities, including registered job-seekers, labour market policy services, and job vacancies. The data is collected from the customer service registries used by the Employment authorities. This means that the data used by Employment Service Statistics is completely registry-based.

The statistical data covers all persons, services, and open vacancies in the above mentioned groups, as separately defined in the registry by the classifications and variables for the statistical period in question.

Owing to seasonal variations, the Employment Bulletin always includes a comparison with the corresponding month in the previous year. The descriptors used in the Bulletin are also available in a table format. The Employment Bulletins are published at the end of the subsequent calendar month. The official date of publication is announced in advance.

The following symbols have been used:

. Category not applicable

... Data subject to secrecy

Links:

- Employment Service Statistics online:
<https://tyomarkkinatori.fi/en/employment-and-statistics/statistics-and-reports/employment-service-statistics>
- Employment Service Statistics' Release dates, Description and Quality Description:
<https://tyomarkkinatori.fi/en/employment-and-statistics/evaluation-and-research/employment-bulletin/publication-dates-in-2025>
- Employment Service Statistics' statistical database (In Finnish):
<https://www.tyonvalitystilasto.fi>
- You can access key information from Employment Service Statistics by visiting the Statistics Finland's StatFin database:
<https://statfin.stat.fi/PxWeb/pxweb/en/StatFin/>
- Comparison between the statistics of Statistics Finland and Employment Service Statistics:
<https://media.graphassets.com/ibCSU7MzQ5S7MeTqSid?dl=true>
- Comparison between the Job Vacancy Survey of Statistics Finland and Employment Service Statistics:
<https://media.graphcms.com/gipDIZmxSOeUqMECNgs?dl=true>

Instructions for referencing:

Official Statistics of Finland (OSF): KEHA Centre / Employment Service Statistics. ISSN 1797-3694 202Y:MM, Employment Bulletin, MONTH 202Y. Helsinki: KEHA Centre (date of reference). Available at:
<https://www.tyollisyksaus.fi>

Contact information

Development and Administrative Services Centre (KEHA Centre)

Evaluation and Knowledge Management Unit

Petri Syvänen, Head Researcher, Tel. +358 295 020 052

E-mail: [forename.surname\(at\)ely-keskus.fi](mailto:forename.surname(at)ely-keskus.fi)

E-mail: [tyonvalitystilasto\(at\)keha-keskus.fi](mailto:tyonvalitystilasto(at)keha-keskus.fi)

<https://tyomarkkinatori.fi/en/employment-and-statistics>

<https://www.tyollisyyskatsaus.fi>